

WORKSTATION MFWS-649GDSB



INDUSTRY'S ONLY STAINLESS STEEL SINK DESIGNED SPECIFICALLY TO BE FLUSH-MOUNTED

• FEATURES

- 16-gauge type 304 stainless steel
- 5-gauge 304 stainless steel rim

• TECHNICAL INFORMATION

- External dimension: 51"Lx18.5"Wx10"D
- Basin dimensions: 49"Lx16.5"Wx10"D
- Rim width: 1"
- Rim thickness: 1/4"
- Rim corner: 1/4" round

• FINISHES

- Gold PVD Safin Brushed stainless steel

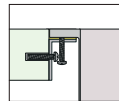
• INSTALLATION OPTIONS

- Flush-mount

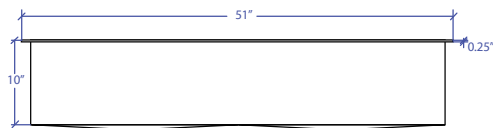
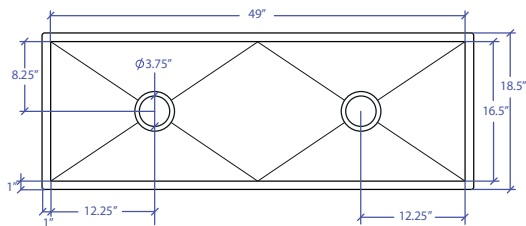
• MINIMUM CABINET SIZE (I.D.)

- Flush-mount 53"

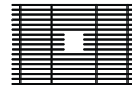
• INSTALLATION TYPE



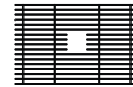
Flush-mount



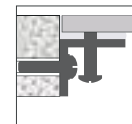
• INCLUDED ACCESSORIES



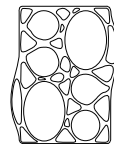
MBG-6520GDSB
Basin Grid



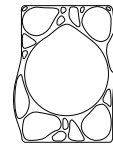
MBG-6520GDSB
Basin Grid



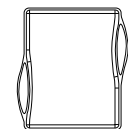
Flush Mount Kit
(Included)
MTK-621AL



MWBM-651GDSB
Bain Marie



MWSM-651GDSB
Salad Mixer



MWCB-651GDSB
Cutting Board



MWC-651GDSB
Colander

US Patent No. 9,988,799 CA Patent No. 2579506
International Patent Pending

PROJECT INFORMATION

Project			
Date	/ /	QTY	
Specifier			
Contact			
Note			

• OPTIONAL ACCESSORIES



MWSS-651GDSB
Side Sink



MDC-101GDSB
Disposal Collar



MKD-101GDSB
Strainer