

WORKSTATION MUWS-631SB



FEATURES

- 16-gauge type 304 stainless steel
- 5-gauge 304 stainless steel rim

TECHNICAL INFORMATION

- External dimension: 33" L x 18.5" W x 10" D
- Basin dimensions: 31" L x 16.5" W x 10" D
- Rim width: 1" • Rim thickness: 1/16"

FINISHES

- Satin Brushed stainless steel

INSTALLATION OPTIONS

- Under-mount

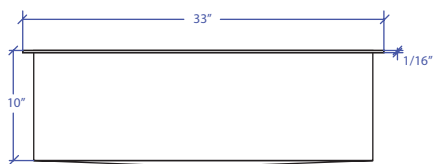
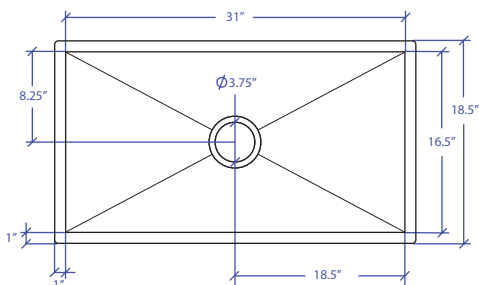
MINIMUM CABINET SIZE (I.D.)

- Under-mount 36"

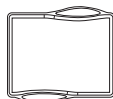
INSTALLATION TYPE



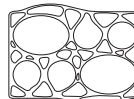
Under-mount



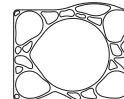
OPTIONAL ACCESSORIES



MWCB-651SB
Cutting Board



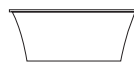
MWBM-651SB
Bain Marie



MWSM-651SB
Salad Mixer



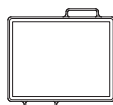
MWC-651SB
Colander



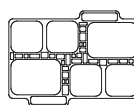
MWSS-651SB
Side Sink



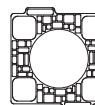
MWRG-651SB
Roll up Grid



MWCBFLW-651SB
Cutting Board



MWBMFLW-651SB
Bain Marie



MWSMFLW-651SB
Salad Mixer



MWCFW-651SB
Colander



MWSSFLW-651SB
Side Sink



MWSA-651SB
Salad Spinner Adapter



MBG-631SB Basin Grid



MKD-101SB
Strainer



MDC-101SB
Disposal Collar



MDC-102SB
Disposal Collar

PROJECT INFORMATION			
Project			
Date	/ /	QTY	
Specifier			
Contact			
Note			

UNDER-MOUNT