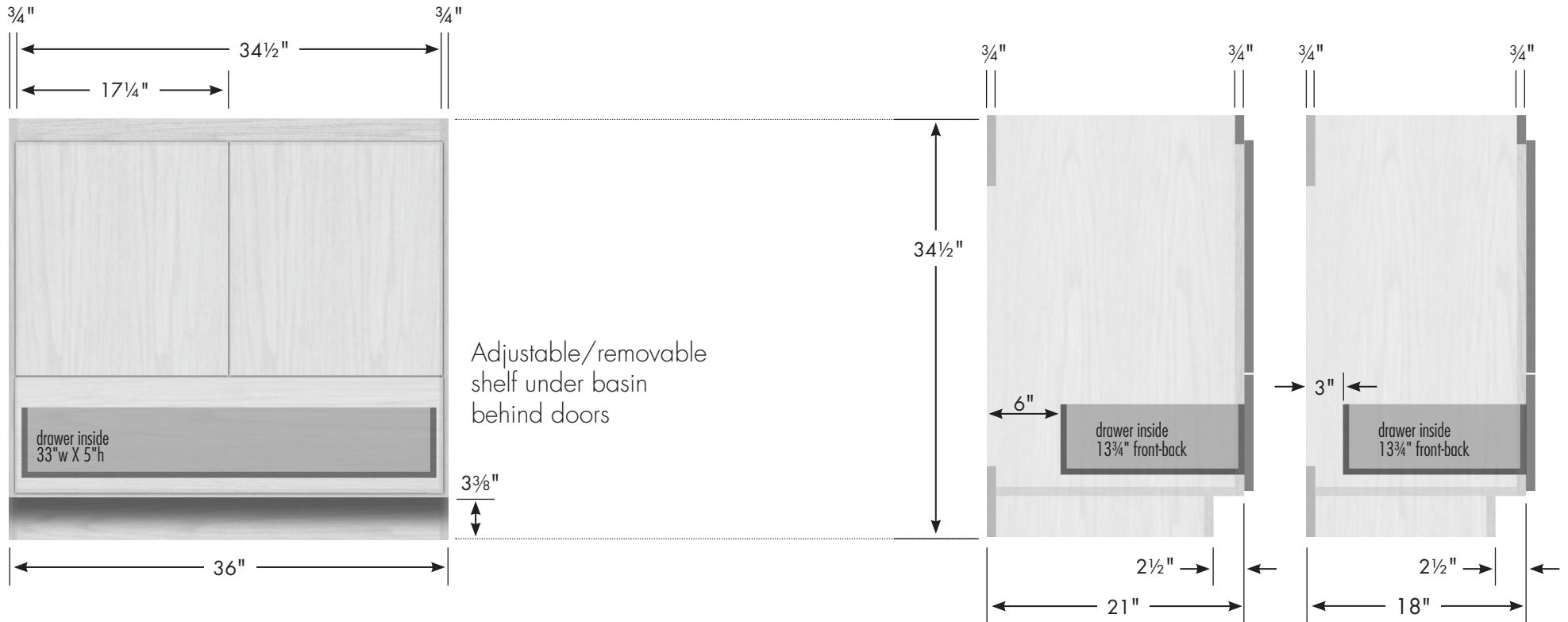


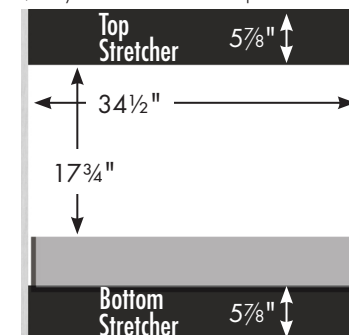
# STRASSER

woodenworks

**34½" tall Montlake Vanity**  
**36" wide, no side drawers**



Vanity back clear openings for plumbing  
 (may need to cut adjustable shelf)



**36" Montlake Vanity**  
**No Side Drawers**  
 36" wide  
 34½" tall  
 21" or 18" front-to-back

