

FR Garniture pour mitigeur thermostatique THG à encastrer avec une fonction arrêt et 2 sorties et une fonction arrêt simple ref. 5540AE avec boîtier d'encastrement

EN Trim for THG thermostat with 2 way diverter and on/off control -ref. 5540AE with box for rough parts

CN THG恒温龙头，用于隐藏式安装，具有停止功能和2个输出和单个停止功能ref.5 540AE带嵌入式安装盒

DE Garnitur für Unterputz-Thermostat THG, Ref. 5540AE ¾", mit Temperatureinstellung, Absperrventil ¾" - unten und 2-Wege-Umstellfunktion ½" mit Absperrung oben

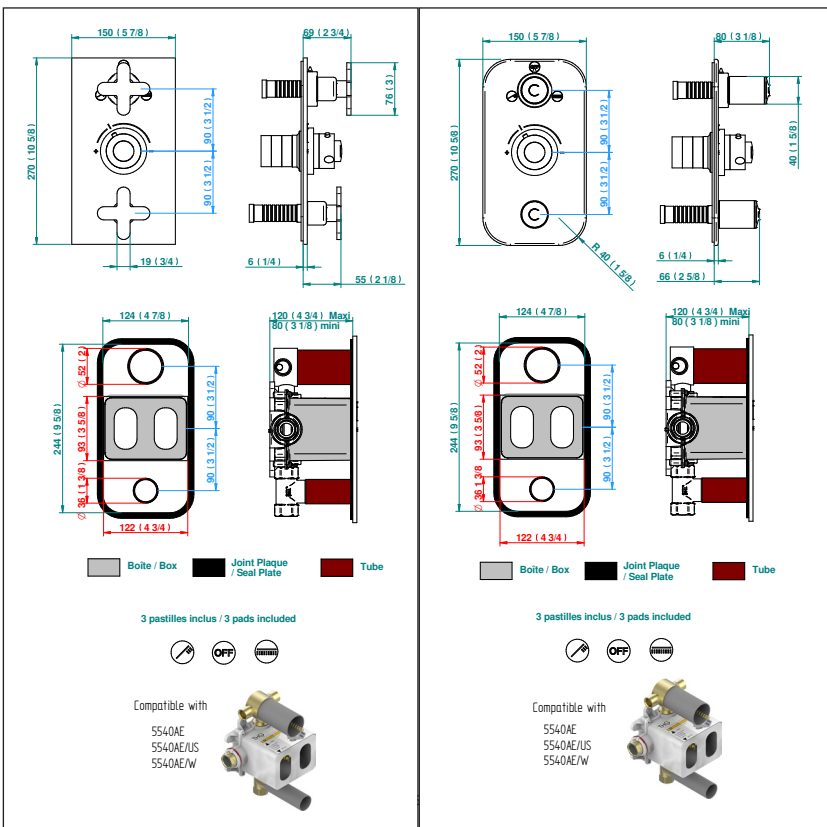
ES Parte exterior del termostático con 2 salidas y una función de parada (para ref 5540AE con caja de emportar)

IT Guarnizione per valvola miscelatrice termostatica THG da incasso con una funzione di arresto e 2 uscite e una funzione di arresto semplice ref.5 540AE con scatola da incasso

NL Pakking voor thermostatische mengkraan THG met stopfunctie en 2 uitgangen en een eenvoudige stopfunctie ref.5 540AE met inbouwbehuizing

RU Гарнитура для терmostатического смесителя THG для встройки с функцией выключения и 2 выходами и с функцией простого выключения арт.5 540AE с корпусом для встройки

AR معادات إضافية للخلاط المنظم للحرارة THG مع وظيفة الغلق ومخرجين ووظيفة الغلق البسيط الرمز المرجعي 5540AE مرفق بصندوق الدمج



Outils (Non-fourni)

Tools (Not provided)

工具 (自备)

Werkzeuge (Nicht mitgeliefert)

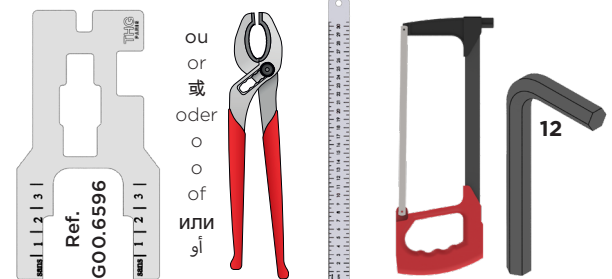
Herramientas (no suministradas)

Utensili (non forniti)

Gereedschap (Niet meegeleverd)

инструменты (Не обеспечен)

الأدوات (غير مرفقة)



Assurez vous d'avoir purgé les canalisations et vérifié l'étalonnage de la cartouche

Make sure you have purged the water pipes, and checked the calibration of the cartridge

确保已清空管道并检查滤芯的校准

Stellen Sie sicher, dass Sie die Kanäle gespült und die Kalibrierung der Kartusche überprüft haben

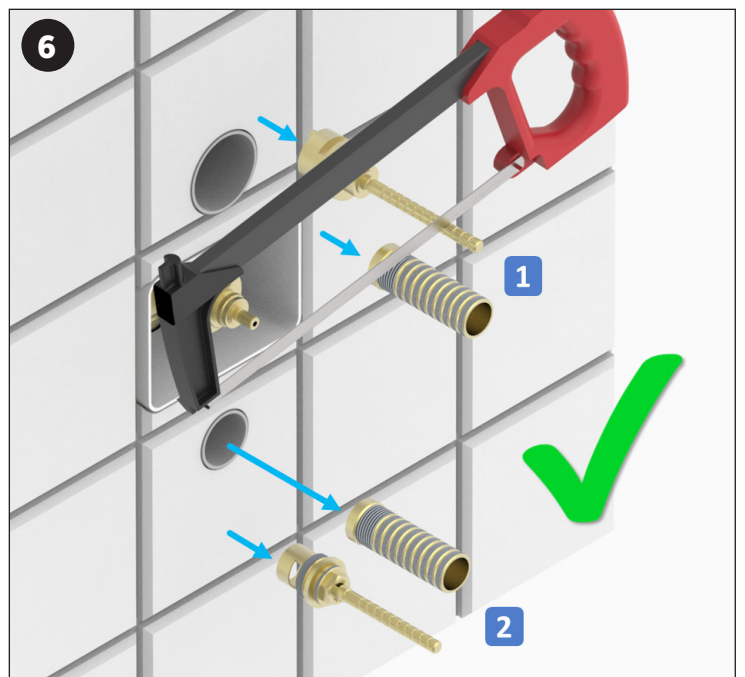
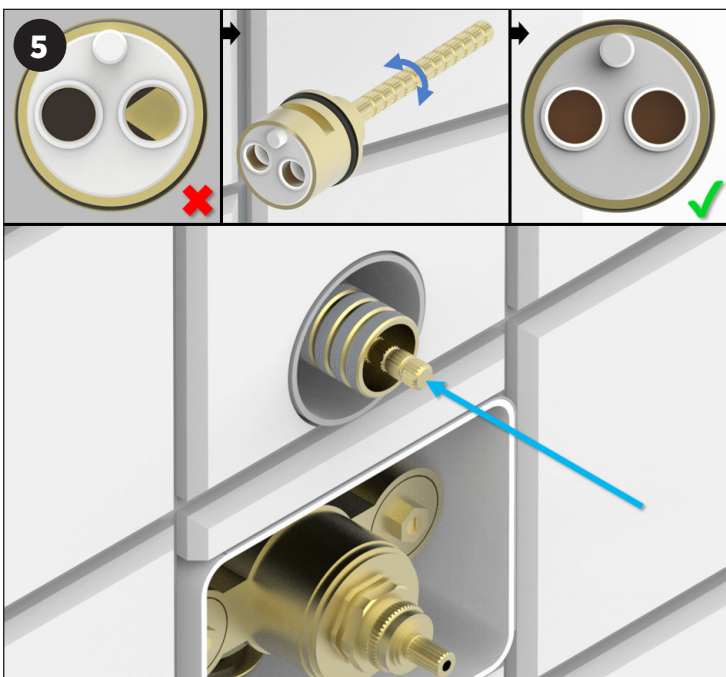
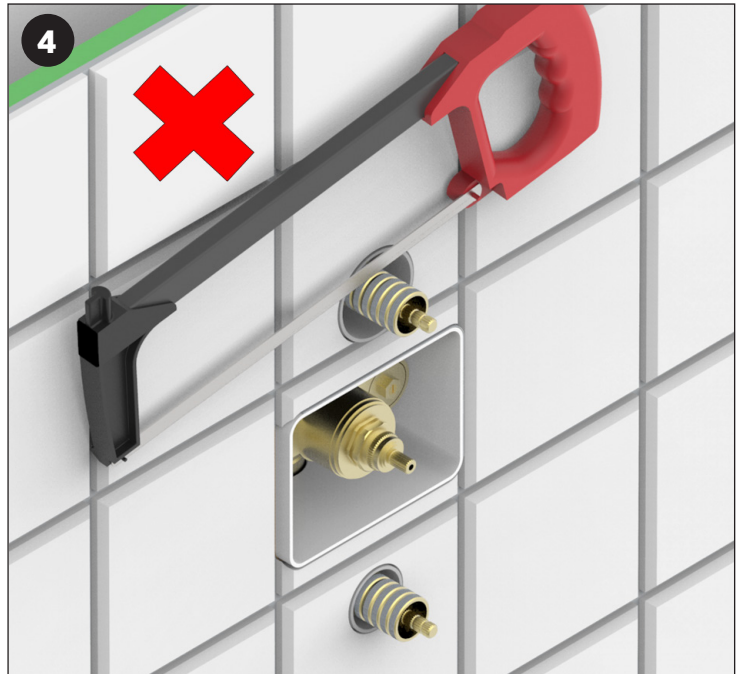
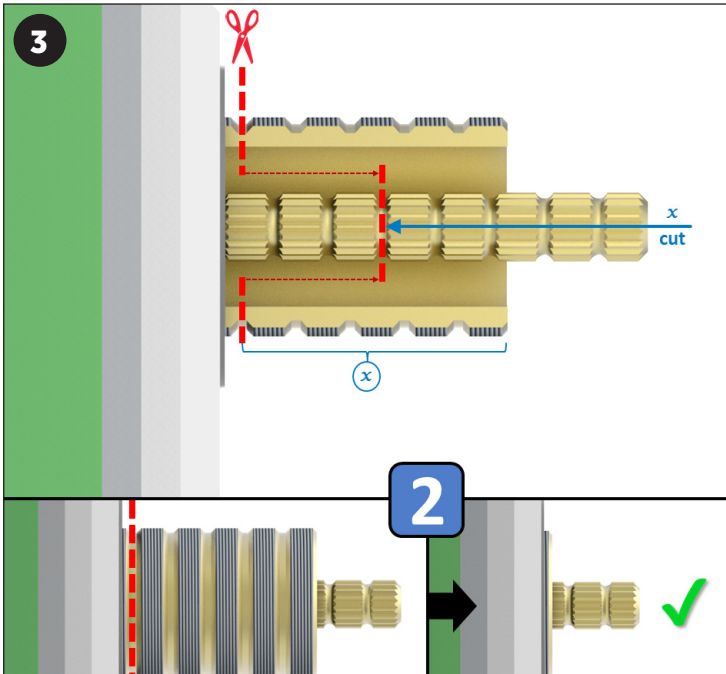
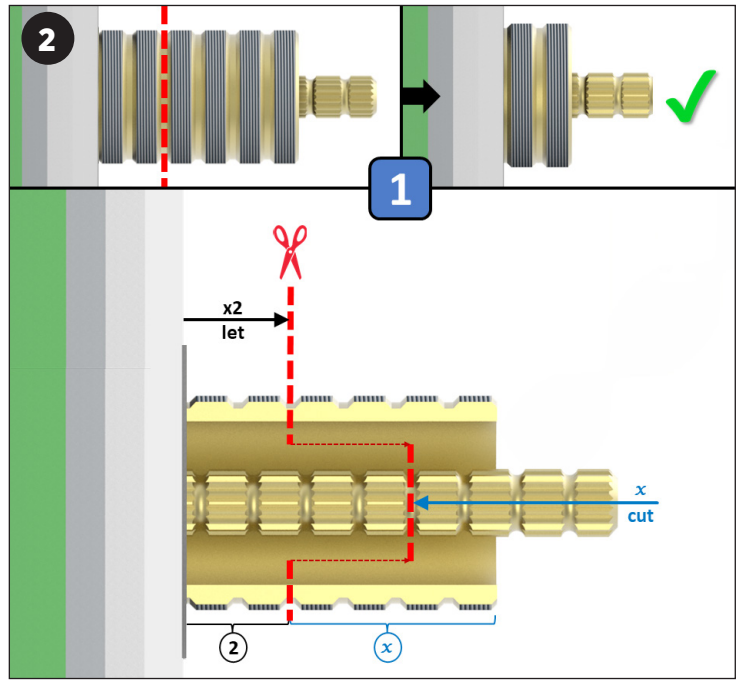
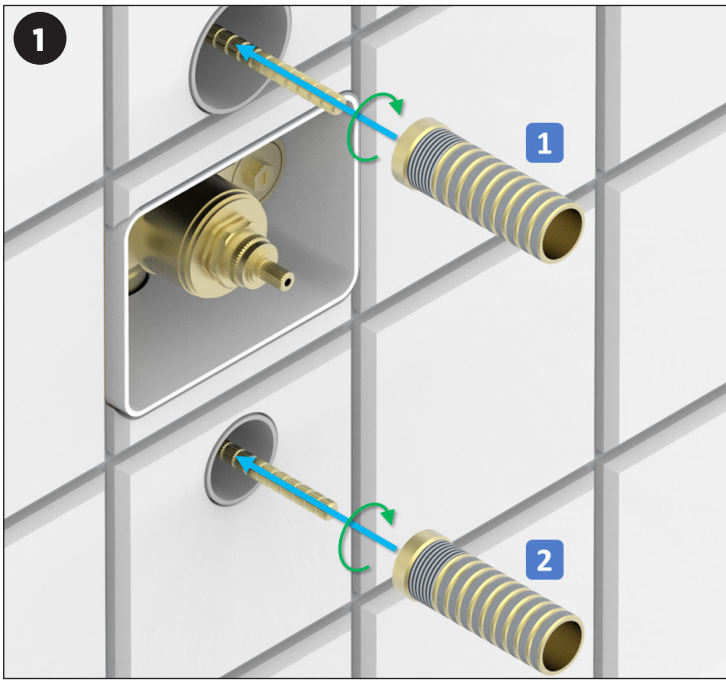
Asegúrese de que ha limpiado los conductos y verificado la calibración del cartucho

Assicurarsi di aver spurgato le condutture e controllato la calibrazione della cartuccia

Zorg ervoor dat u de leidingen hebt ontluucht en de kalibratie van de cartouche hebt gecontroleerd

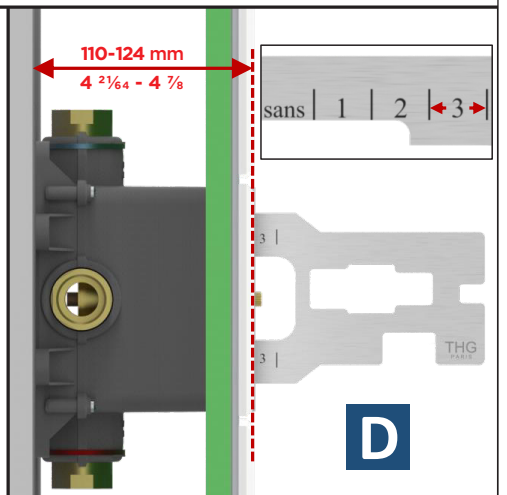
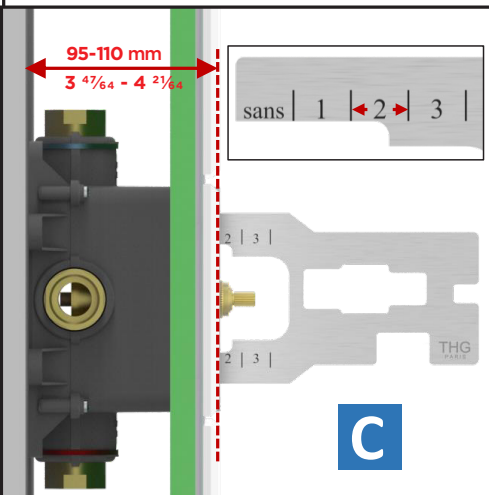
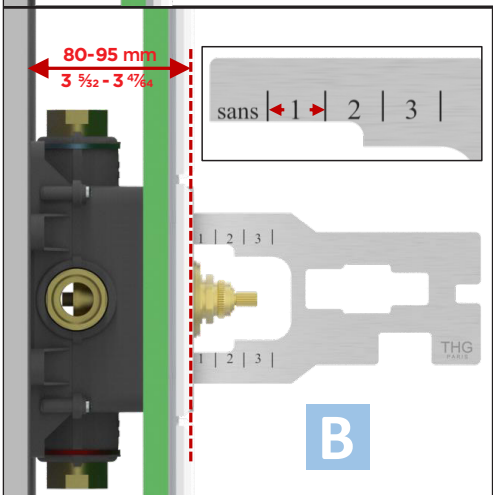
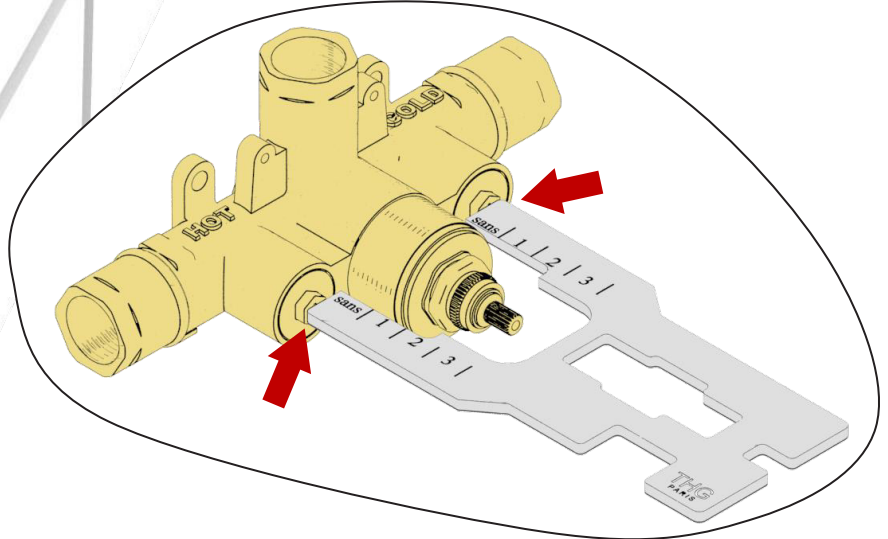
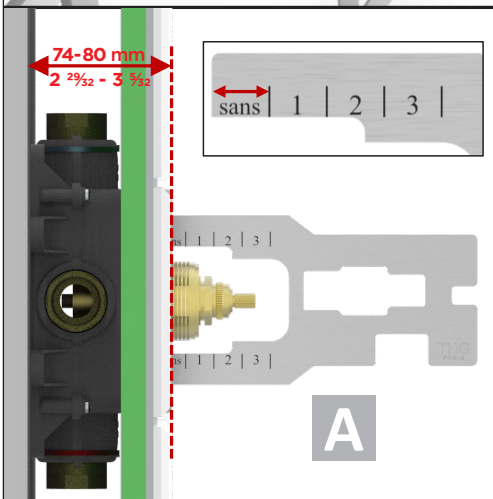
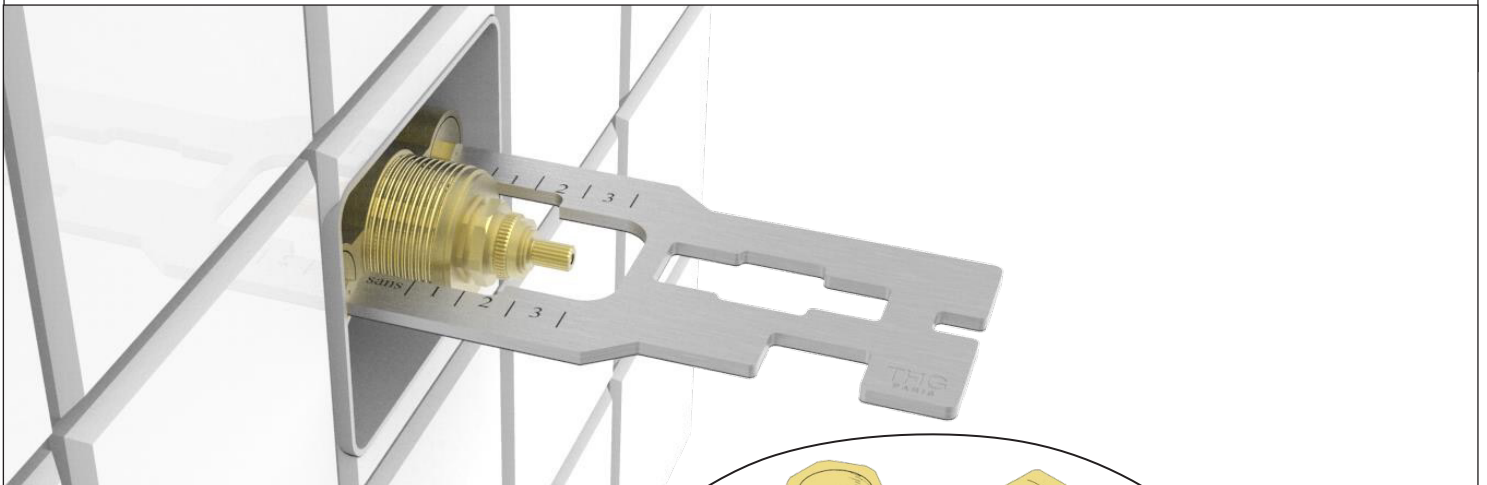
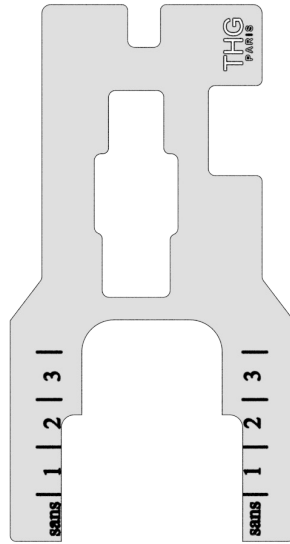
Убедитесь, что вы прочистили трубопроводную сеть и проверили калибровку картриджа

تدرياعمر نمر ققحت و تاونقلا ري هطت نمر دكأت دش وطرخلا



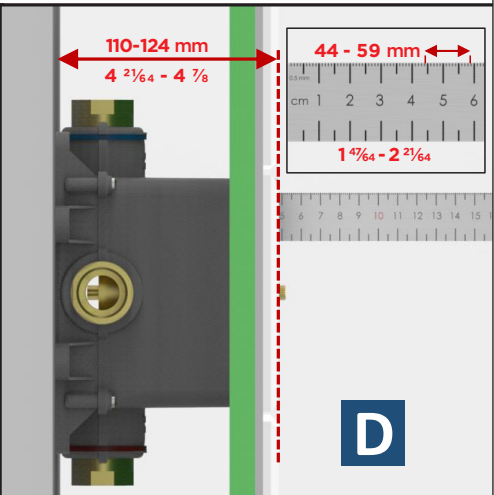
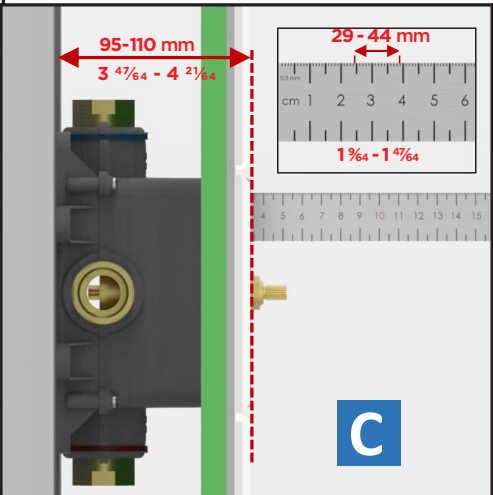
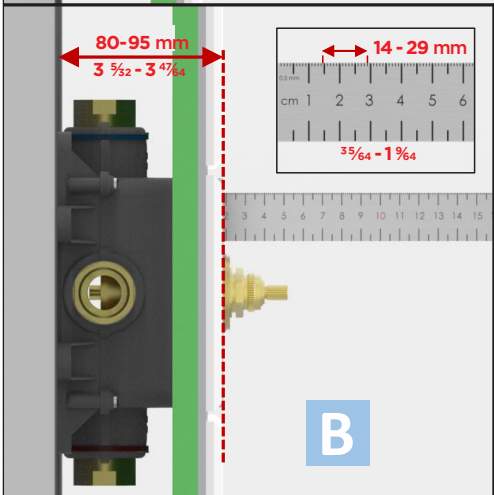
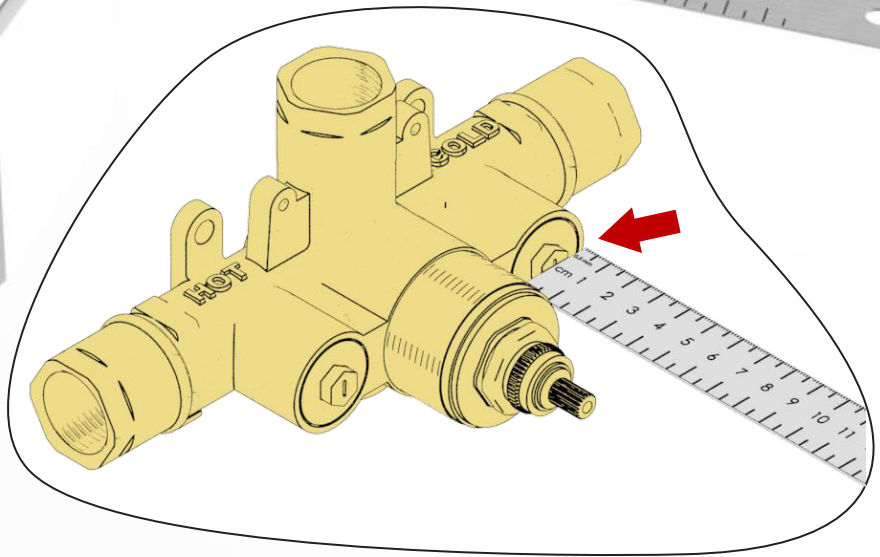
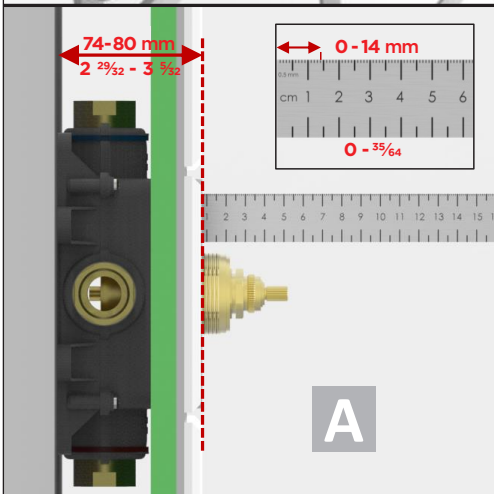
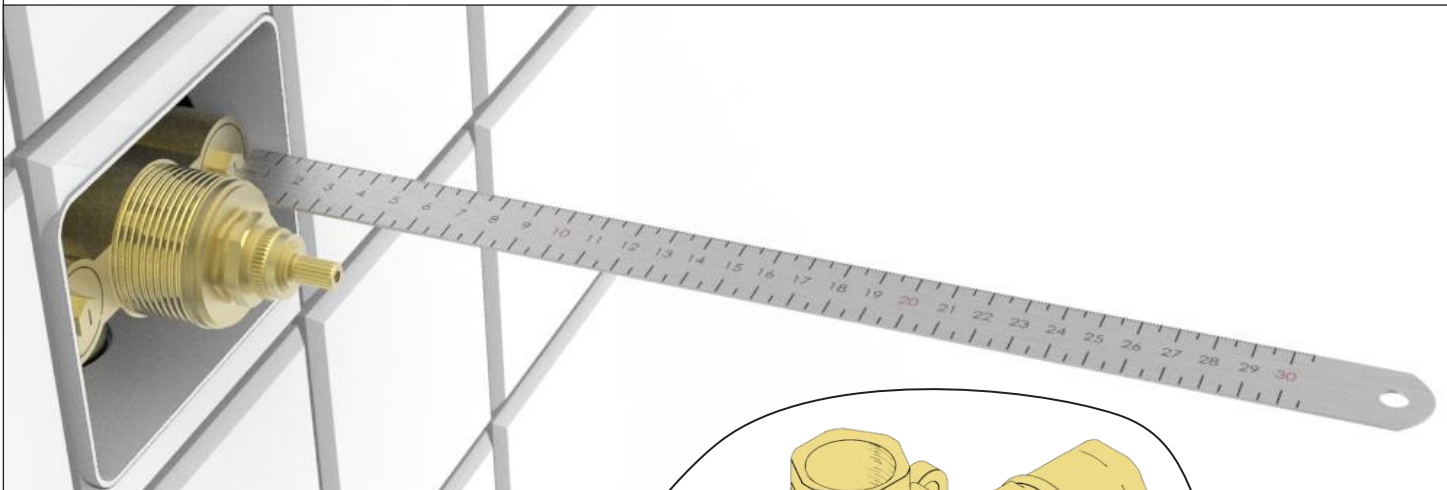
7a

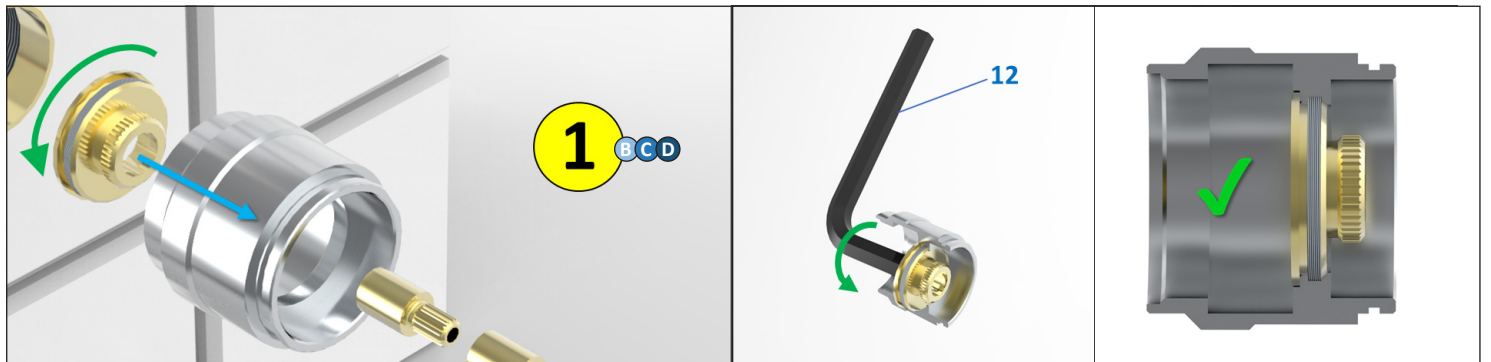
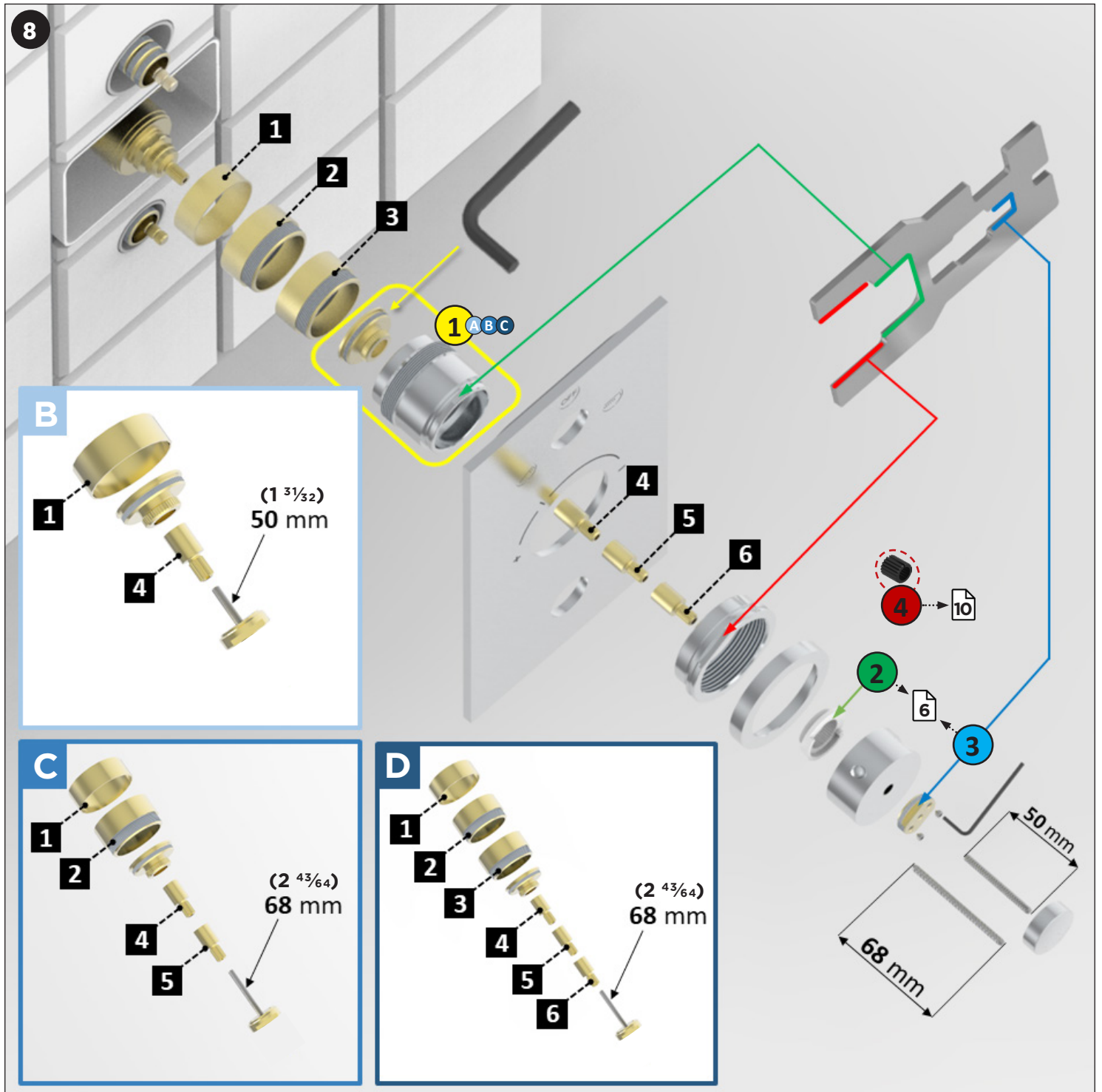
Ref.
G00.6596

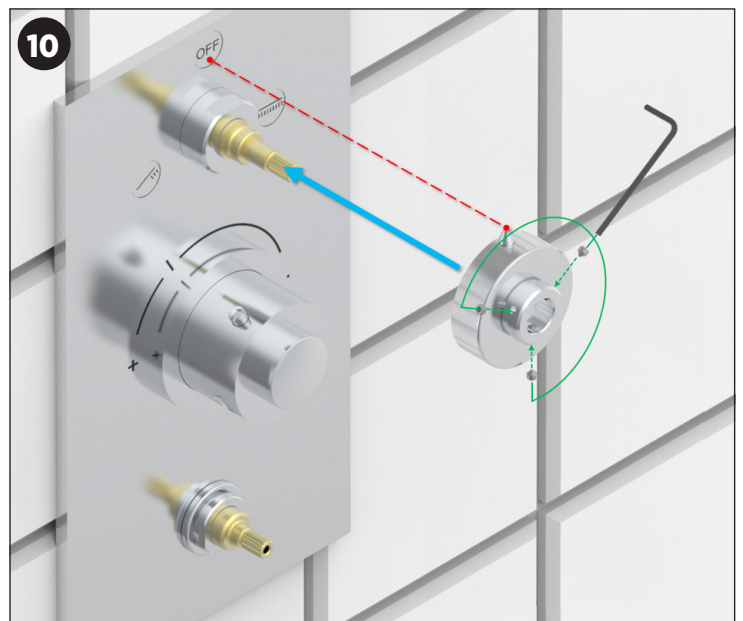
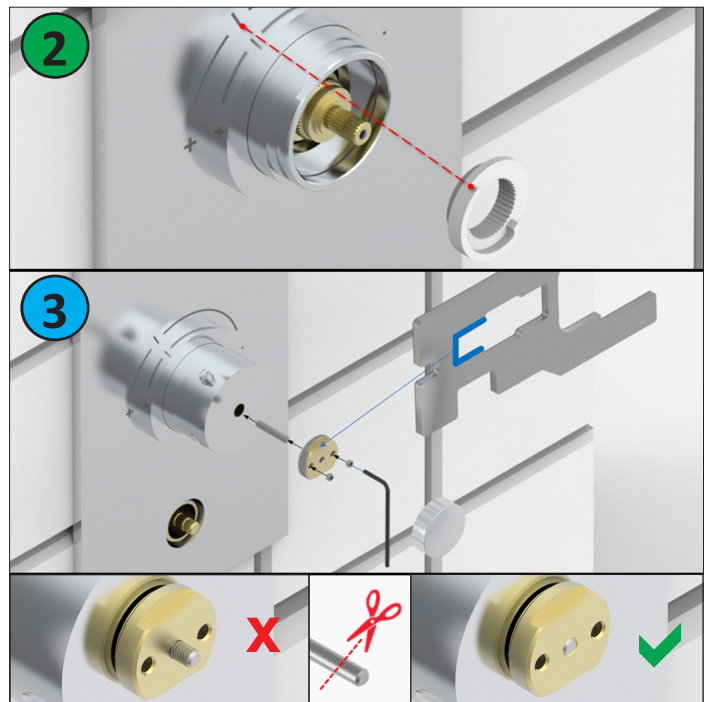
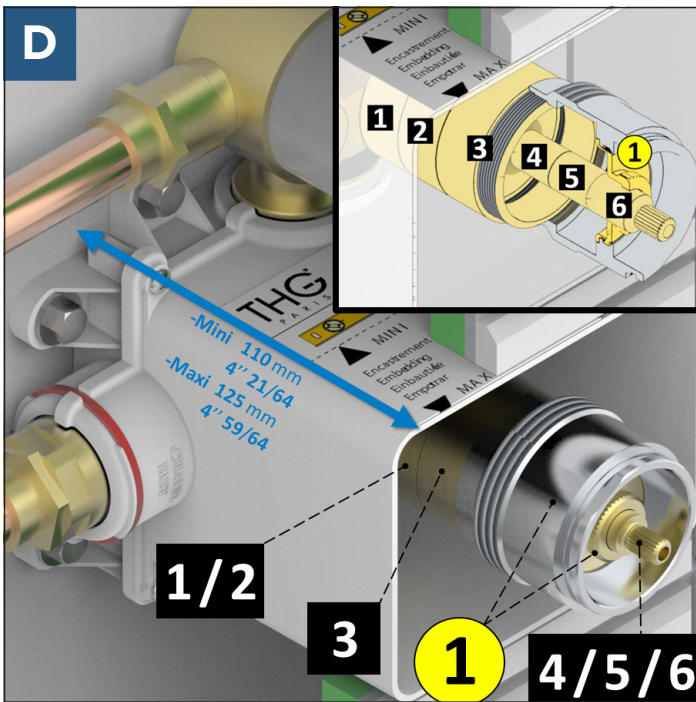
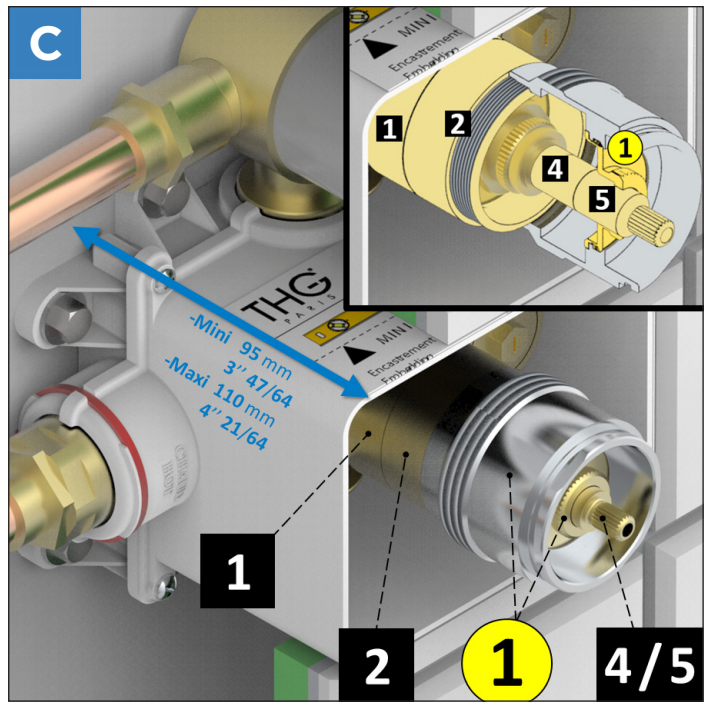
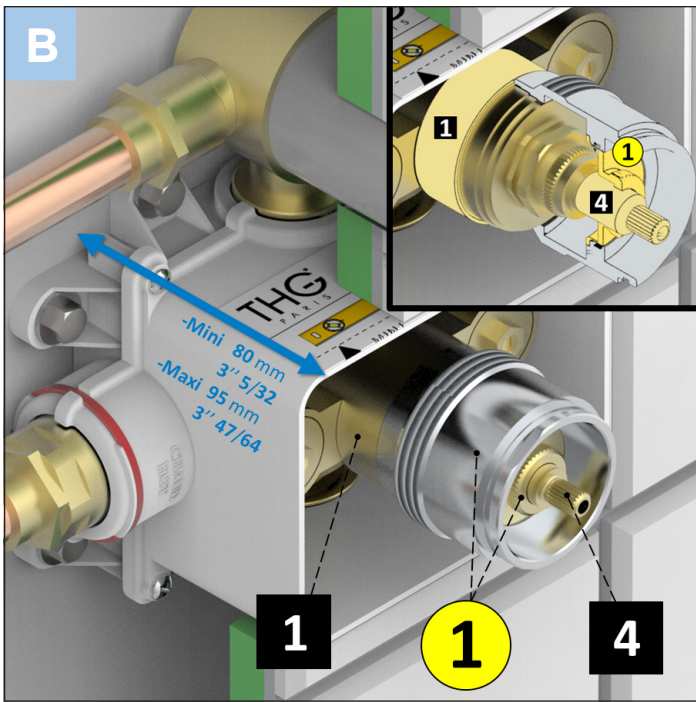


7
b

ou
or
或
oder
o
o
of
или
أو







Montage des croisillons / manettes

Handle / lever assembly

装配十字接头 / 手柄

Montage von Traversen / Armaturen

Montaje de separadores/palancas

Montaggio dei transetti/manopole

Montage kraanknoppen/handgreep

Монтаж крестообразных рукояток / рычагов

تركيب ضوابط صليبية/مقابض

11

4 cas possibles

4 possible cases

4 种可能的案例

4 mögliche Fälle

4 casos posibles

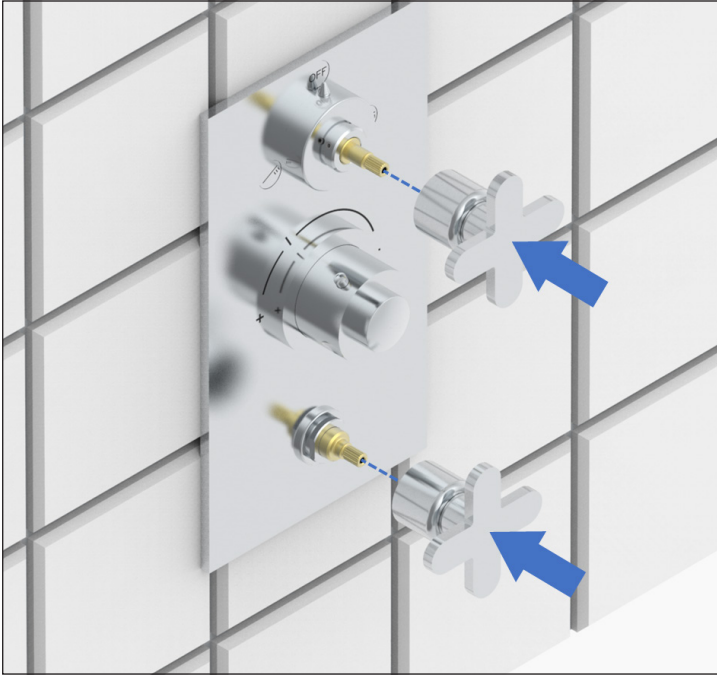
4 casi possibili

4 gevallen mogelijk

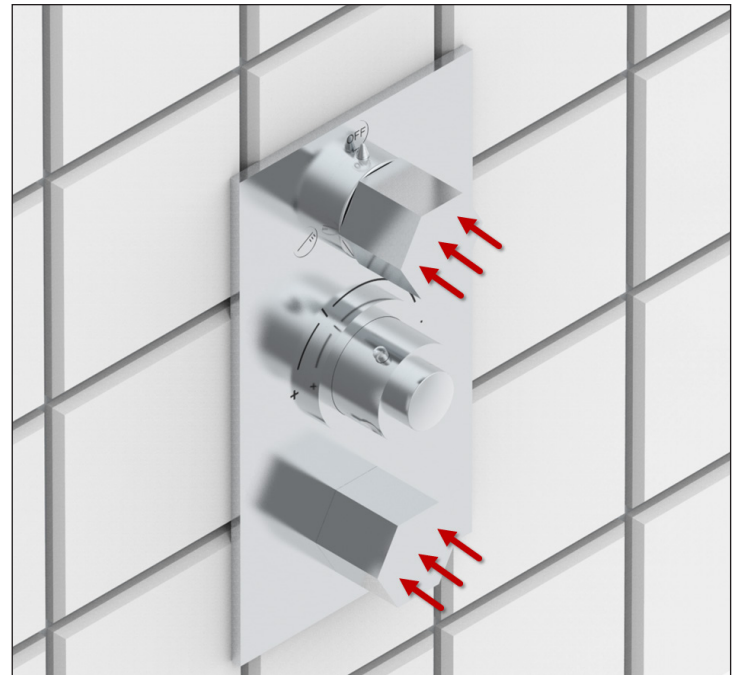
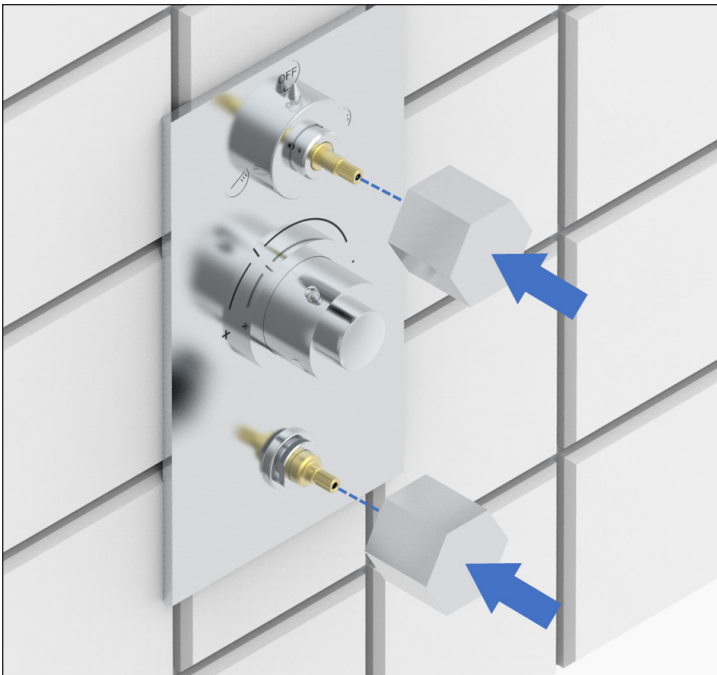
4 варианта возможны

4 حالات ممكنة

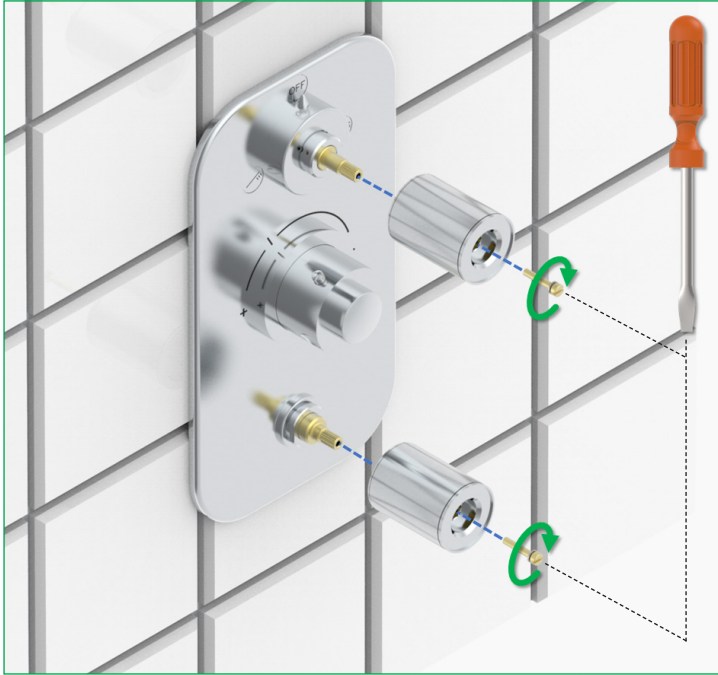
1



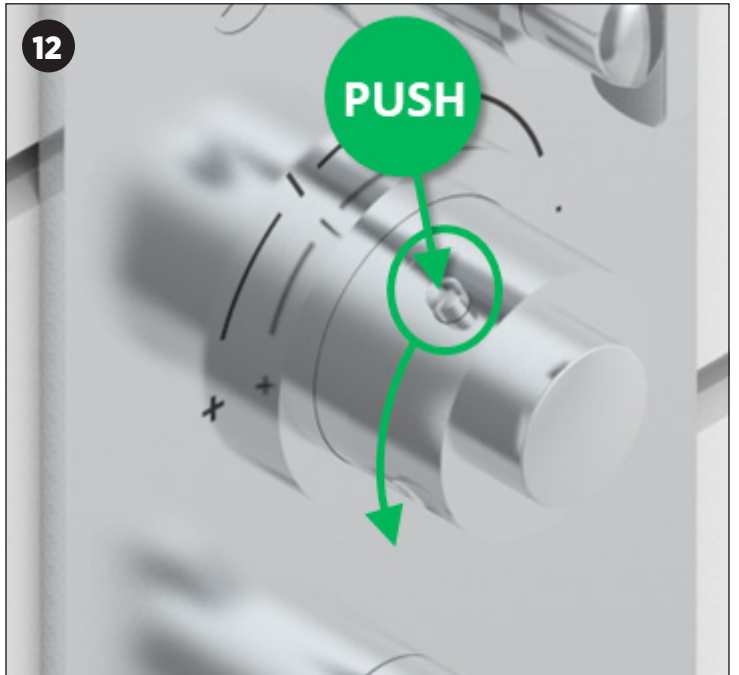
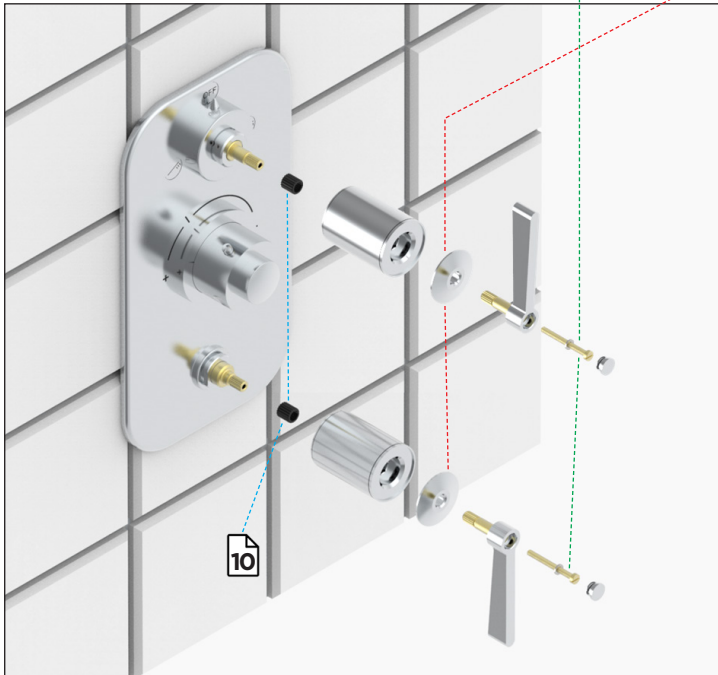
2



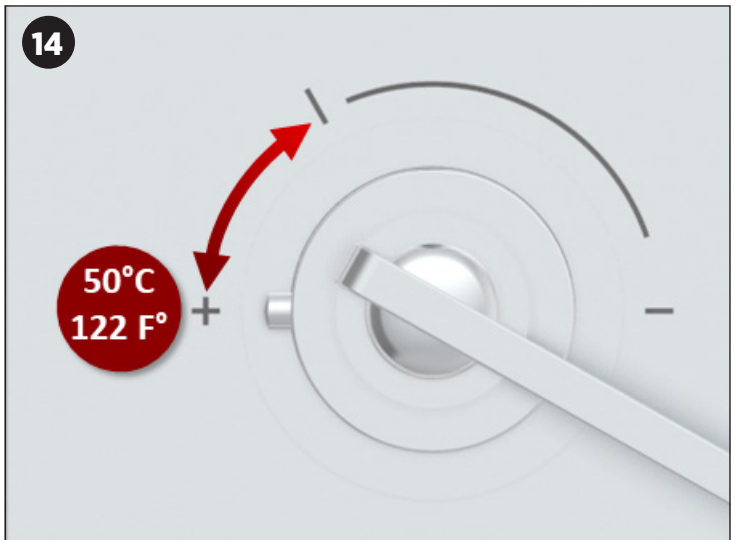
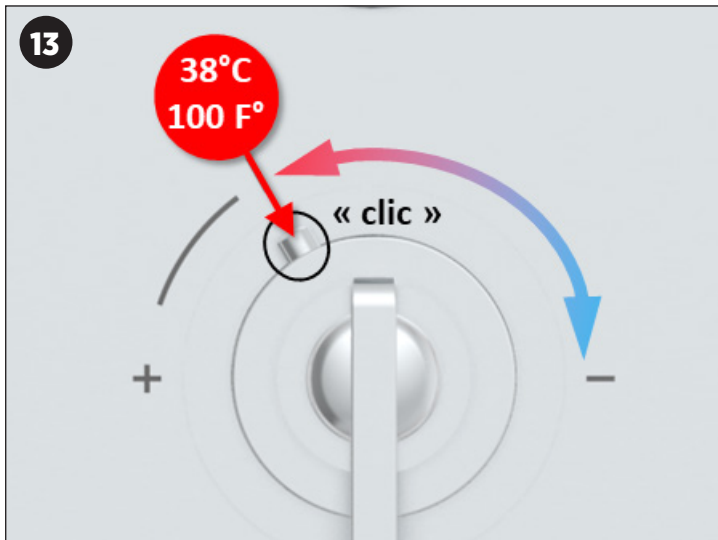
3

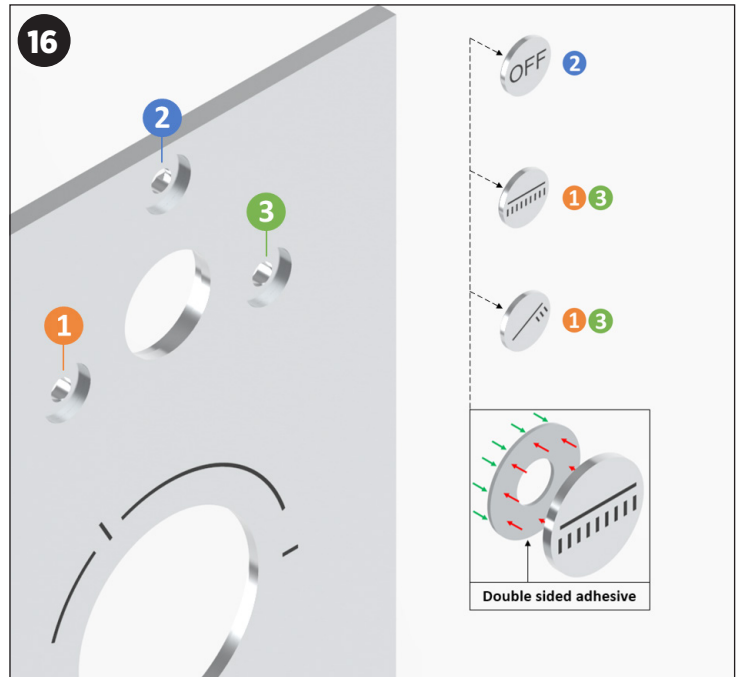
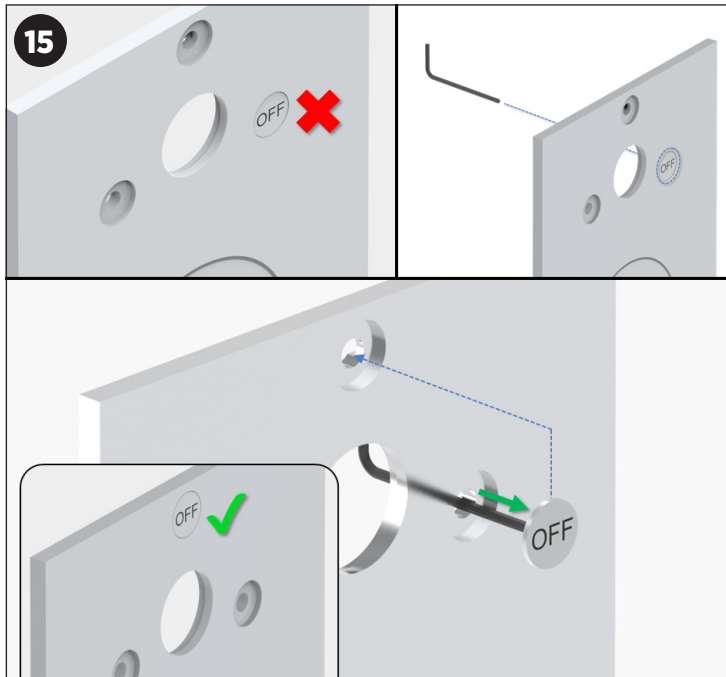


4



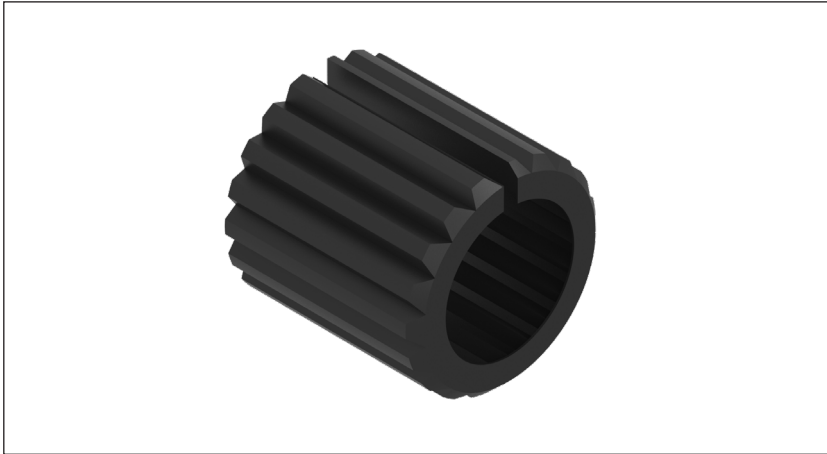
Réglage de température / Temperature adjustment / 温度校准 / Temperatureinstellung / Ajuste de temperatura / Regolazione della temperatura / Instellen van temperatuur / Регулировка температуры / ضبط الحرارة





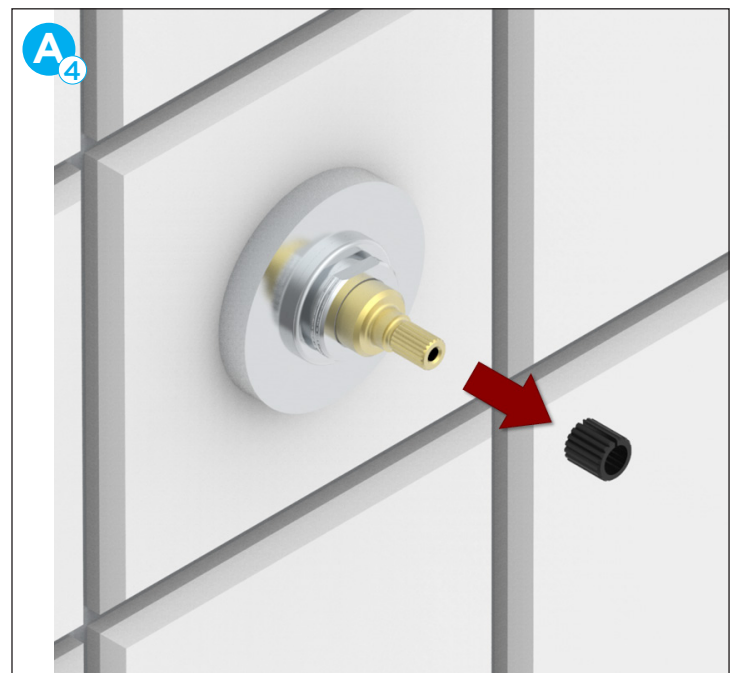
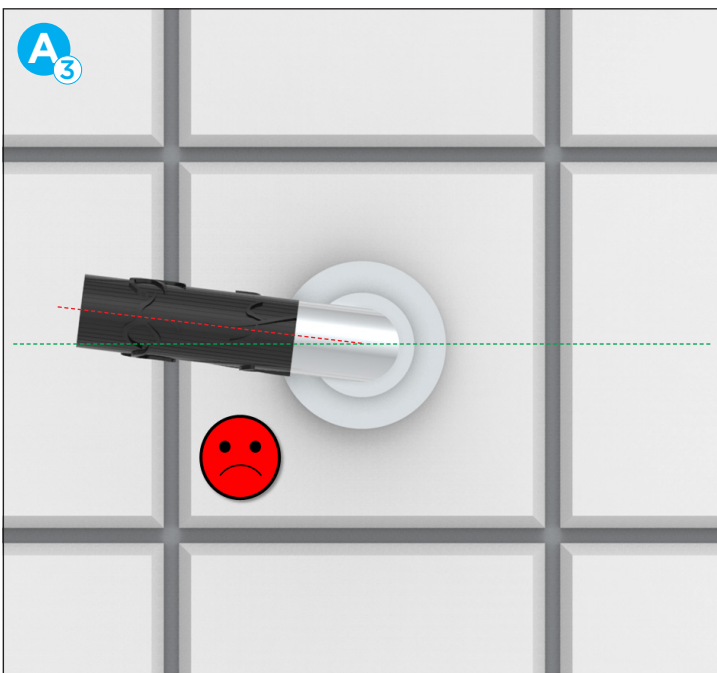
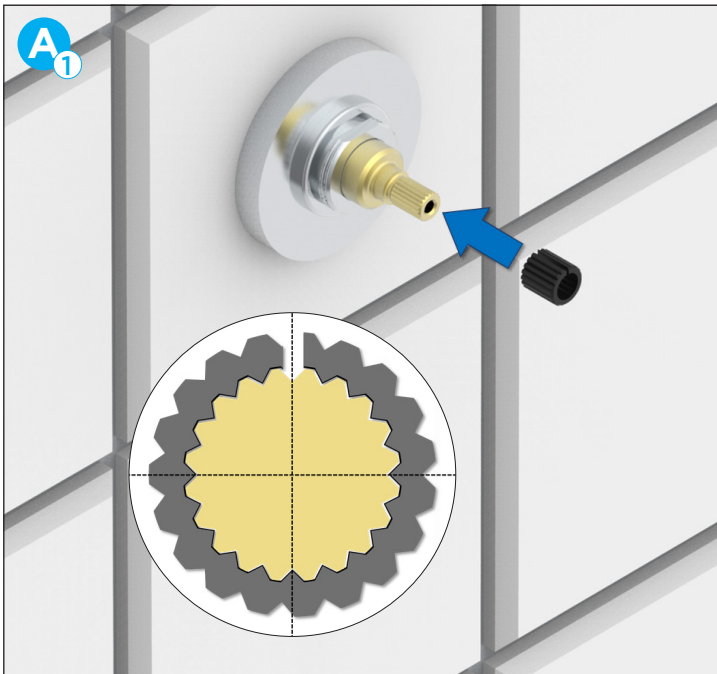
Insert plastique strié

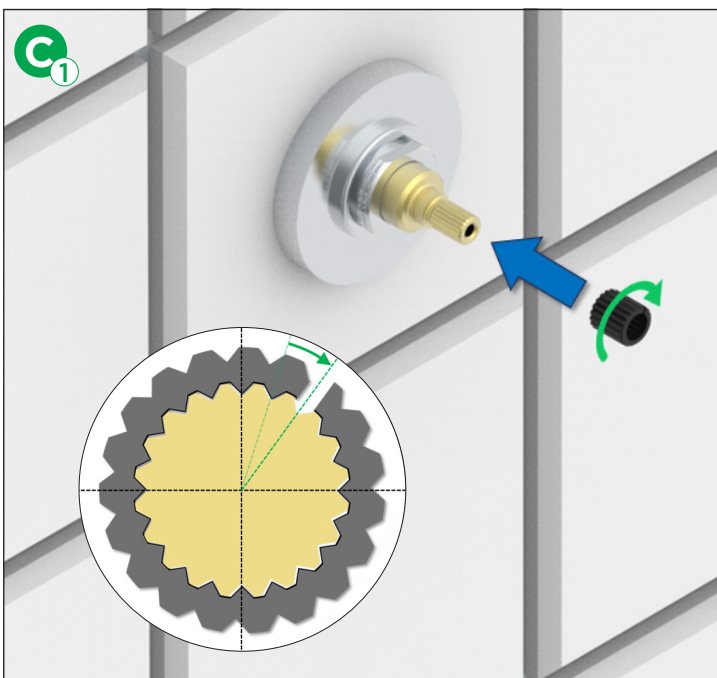
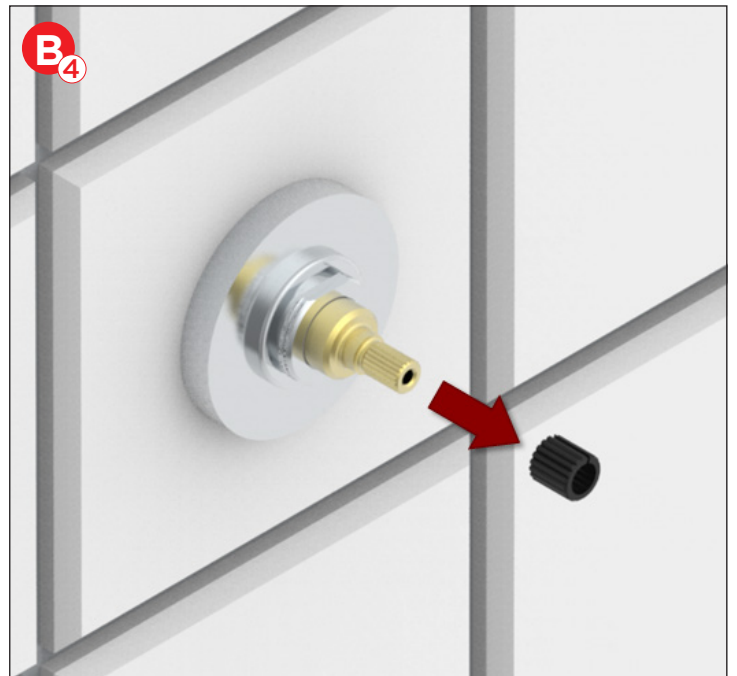
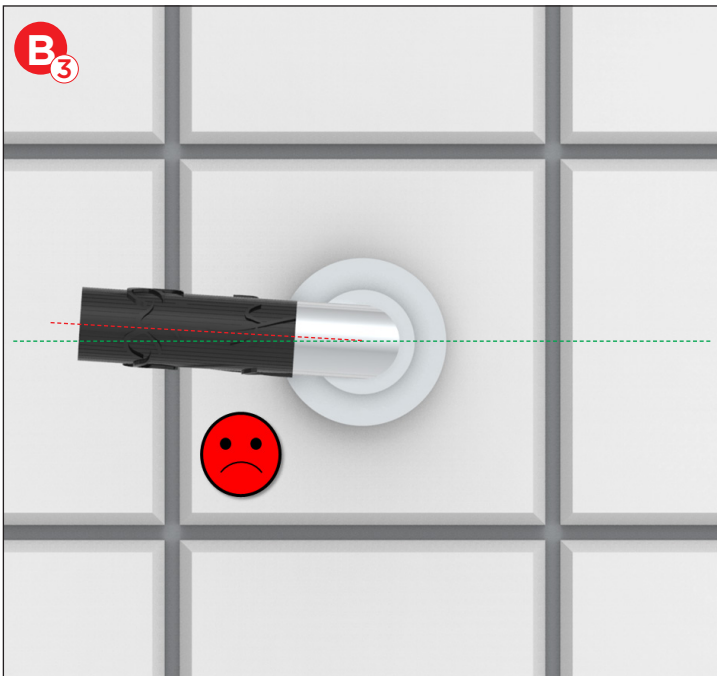
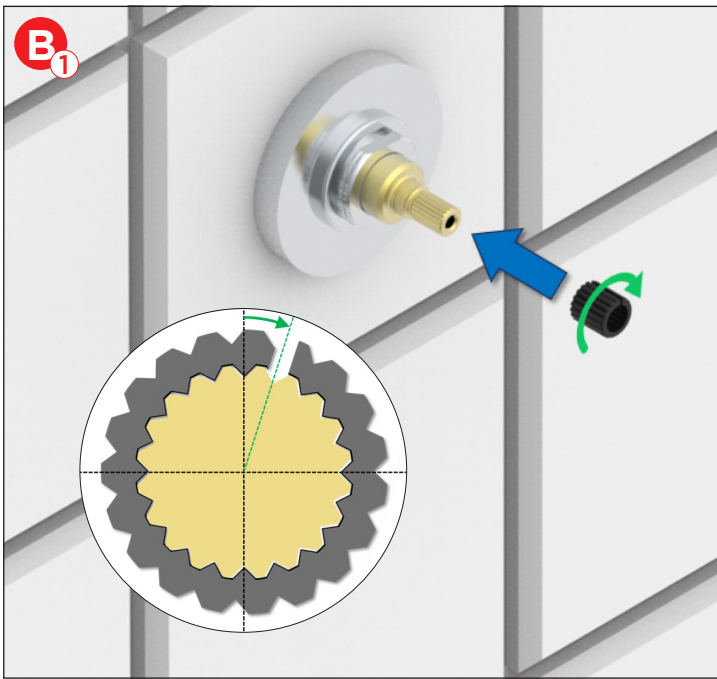
Notice d'installation / Installation instructions / 安装说明 / Installationsanleitung / Instrucciones de instalación / Istruzioni per l'installazione / Installatie handleiding / Инструкции по установке / إرشادات التركيب

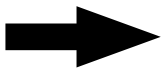
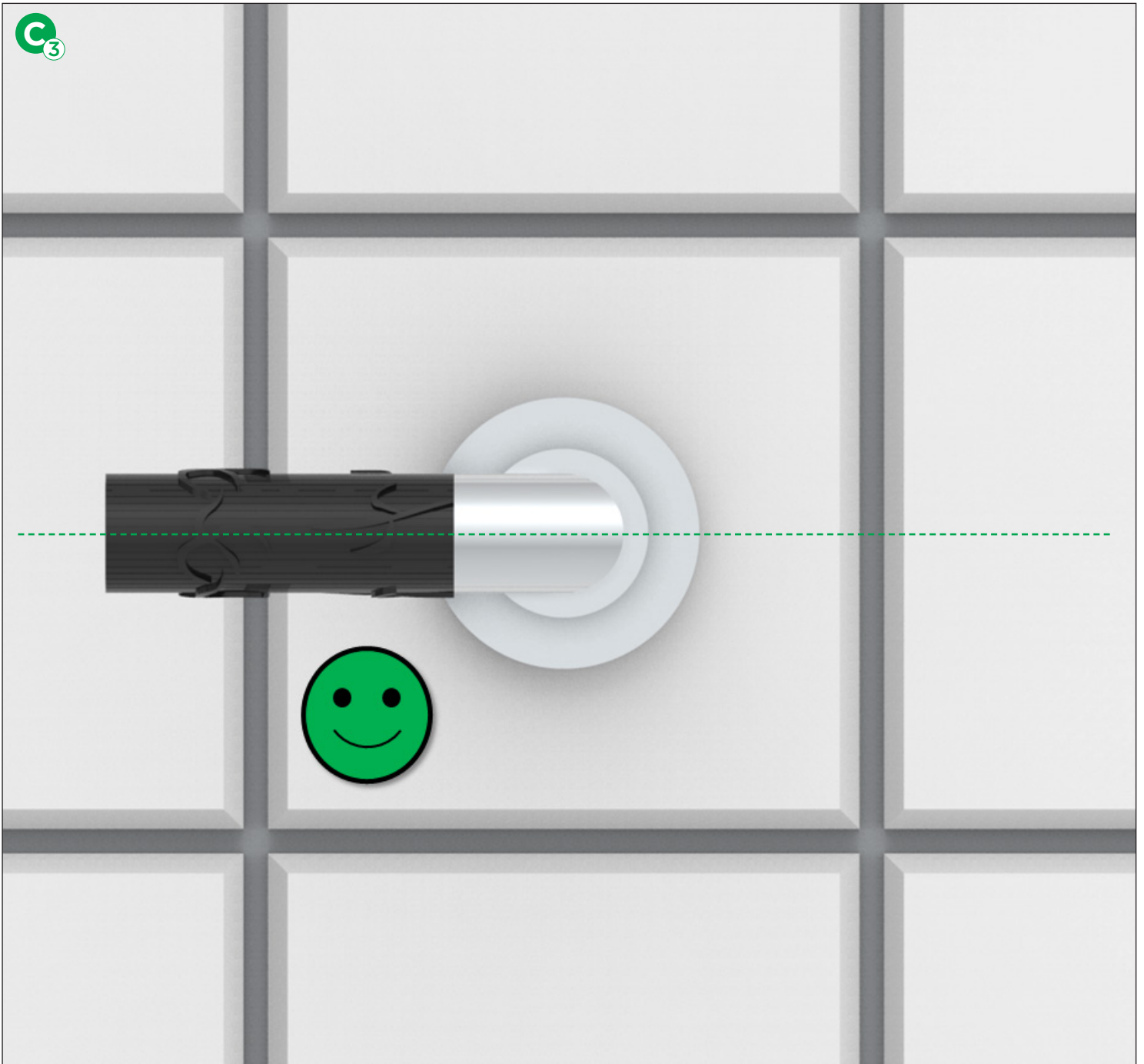


- FR** Insert plastique strié
- EN** Grooved plastic insert
- CN** 条纹塑料插件
- DE** Geriffelter Kunststoffeinsatz
- ES** Inserto plástico estriado
- IT** Inserto in plastica striata
- NL** Gegroefde kunststof inleg
- RU** Пластиковая рубчатая прокладка

ملحق بلاستيكي مُحزَّر **AR**







Répéter l'opération jusqu'à obtenir la position verticale ou horizontale (19 positions possibles)

Repeat the procedure until you obtain the right vertical or horizontal position (19 possible positions)

重复操作，直到达到垂直或水平位置（可能有 19 个位置）

Wiederholen Sie den Vorgang, bis die vertikale oder horizontale Position erreicht ist (19 mögliche Positionen)

Repetir la operación hasta obtener la posición vertical u horizontal (19 posiciones posibles)

Ripetere l'operazione fino al raggiungimento della posizione verticale o orizzontale (sono possibili 19 posizioni)

Herhaal de handeling totdat u de verticale of horizontale positie bereikt (19 mogelijke posities)

Повторяйте операцию, пока не достигнете вертикального или горизонтального положения (возможны 19 положений)

كزّر العملية إلى غاية الحصول على الوضع العمودي أو الأفقي (٩١ وضعاً ممكناً)