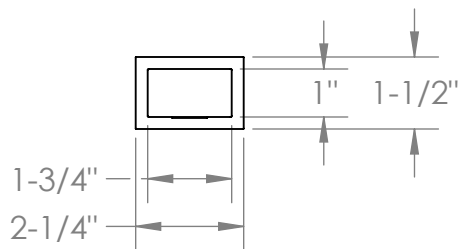
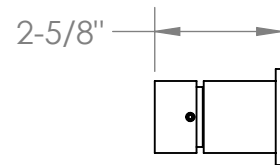
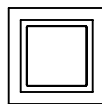
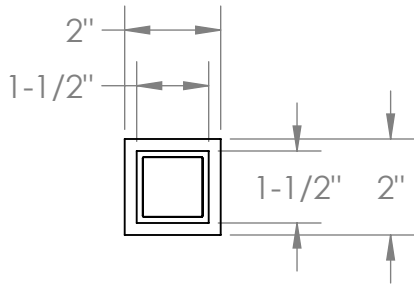
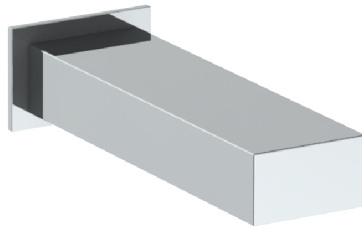


97-5-J6

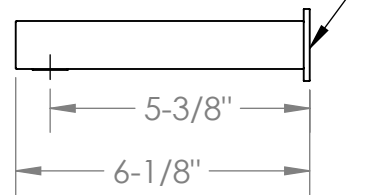
Wall Mounted 3 Hole Bath Set

For use with SS-506 or SS-THV2.2-26C Concealed Rough

Note: Some building codes require remote pressure balance valves for anti-scald.



1/2"-14 NPT FEMALE



Meets the applicable requirements of ASME A112.18.1-2005/CSA B125.1-05, entitled "Plumbing Supply Fittings"