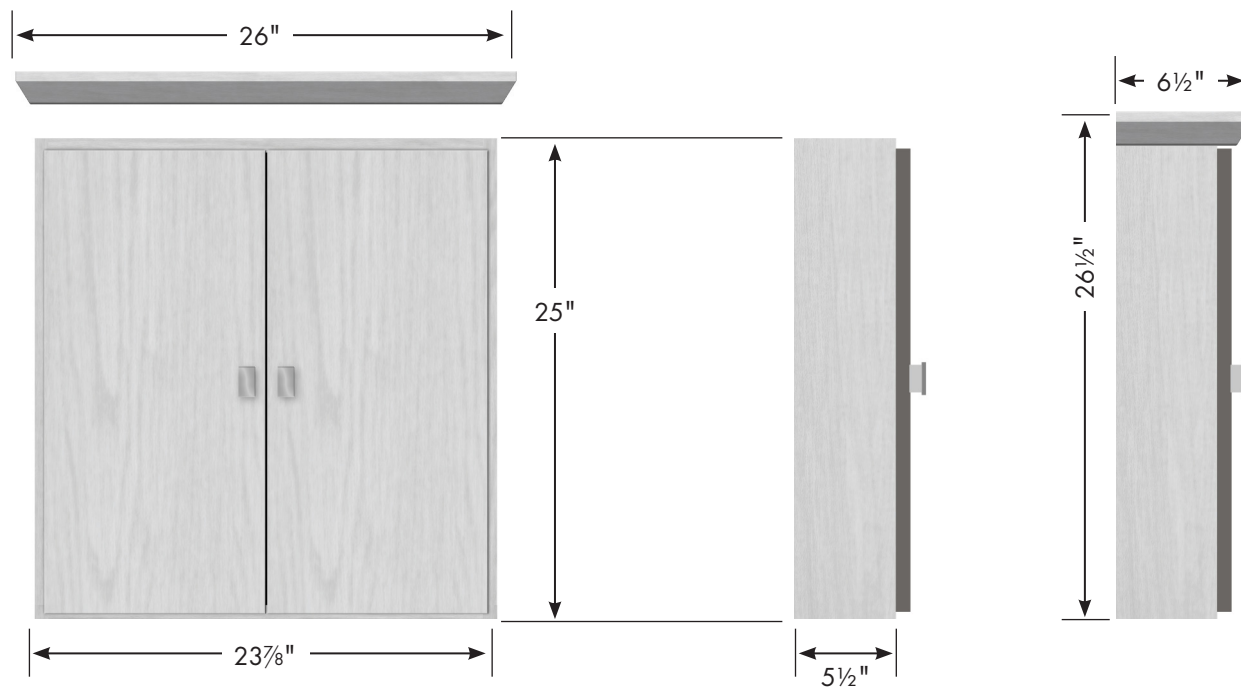


# STRASSER

Specifications:  
24" Traditional  
Cubby



2 adjustable position shelves; 3/8" thick frosted acrylic, radiused front edge.

## 24" Traditional Cubby

23<sup>7</sup>/<sub>8</sub>" wide

25" tall

5<sup>1</sup>/<sub>2</sub>" front-to-back

*with optional crown:*

26" wide, 26<sup>1</sup>/<sub>2</sub>" tall, 6<sup>1</sup>/<sub>2</sub>" front-to-back



⇐ *with optional crown*

4